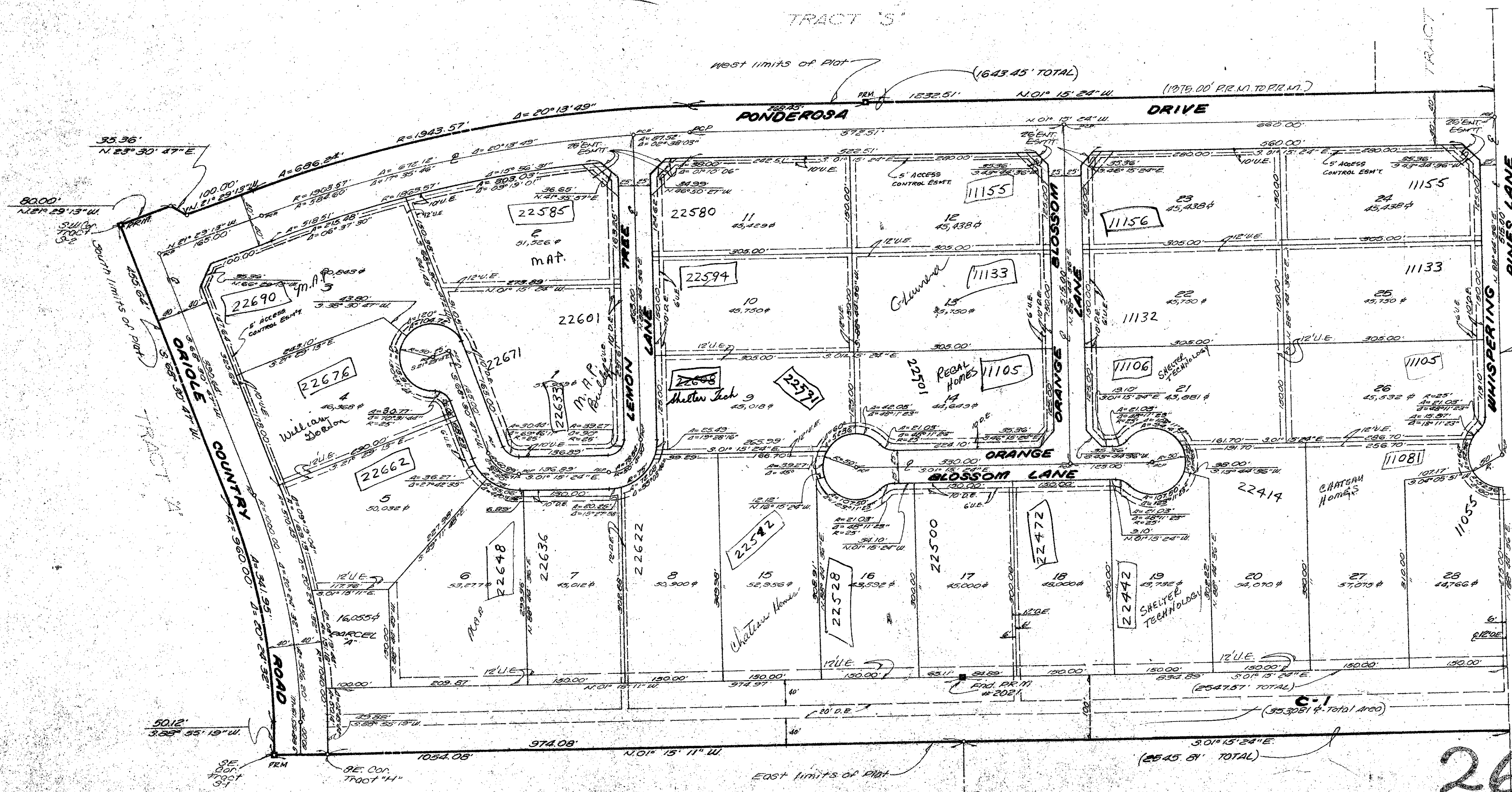
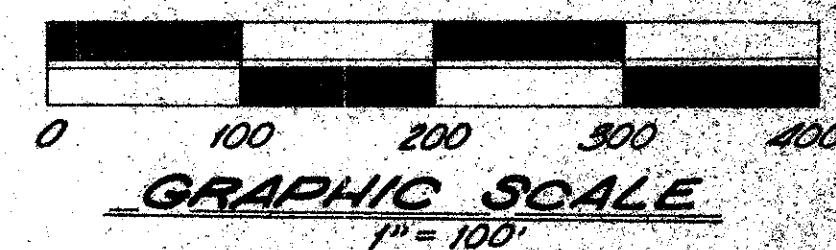
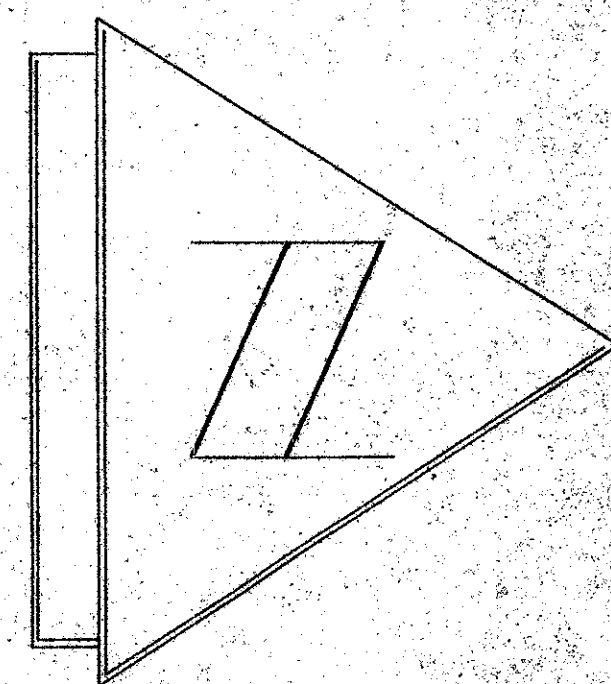


A PORTION OF LOGGERS RUN, A PLANNED UNIT DEVELOPMENT

TAMARRON

A RESUBDIVISION OF TRACT "H", S-2 AND A PORTION OF TRACT S-1 OF BOUNDARY PLAT OF ORIOLE COUNTRY (PLAT BOOK 32 PAGES 175-190) SECTION 26, TOWNSHIP 47 SOUTH, RANGE 41 EAST PALM BEACH COUNTY, FLORIDA

10



MATCH LINE "A" THIS SHEET. SEE MATCH LINE "B" SHEET 3

0275-319

THIS INSTRUMENT PREPARED BY:
KEITH SCHNARS
LAND SURVEYING SCIENCES, P.A.
BY THOMAS F. GUNNAB, P.L.S. #2900

34-10

U.E. denotes Utility Easement.
D.E. denotes Drainage Easement.

TURNOUT REQUIRED

26/47/41

A.S.I.

TAMARRON